

## ALMARINI



http://www.almarianni.com  
info@almarianni.com  
+371 29295267 +371 29295267  
Rīga, Bīķernieku iela 226 - 31,  
LV-1079

Company type  
Registration Number  
Industry

Turnover (EUR)  
Certificates

Limited responsibility company  
40103522975  
Manufacture of cocoa, chocolate  
and sugar confectionery (10.82)  
258917.00

## AL MARI ANNI | PUMPKIN IN WHITE CHOCOLATE



Product group  
Confectionery & Cocoa preparations  
Product subgroup  
Chocolate and other food preparations  
containing cocoa,  
Fruits/berries/nuts in chocolate  
Product code  
1806  
Product line

Product weight NET 100 Gram (g)  
Product weight GROSS 118 Gram (g)  
Alcohol % by volume 0  
Storage terms (days) 365  
Storage temperature min (C) 13  
Storage temperature max (C) 23  
Storage conditions Dry and cool place  
Kind of packaging Packaging from composite  
materials  
Units per box 10



## AL MARI ANNI | DARK AND WHITE CHOCOLATE MIX WITH HANDPICKED PECANS, ALMONDS, HAZELNUTS AND PUMPKIN SEEDS



Product group  
Confectionery & Cocoa preparations  
Product subgroup  
Chocolate and other food preparations  
containing cocoa,  
Chocolate bars and slabs  
Product code  
1806  
Product line

Product weight NET 80 Gram (g)  
Product weight GROSS 108 Gram (g)  
Alcohol % by volume 0  
Storage terms (days) 230  
Storage temperature min (C) 13  
Storage temperature max (C) 23  
Storage conditions Dry and cool place  
Kind of packaging Packaging from composite  
materials  
Units per box 20



## AL MARI ANNI | DARK CHOCOLATE WITH DRIED CHERRIES AND EXQUISITE GOLD DUSTING

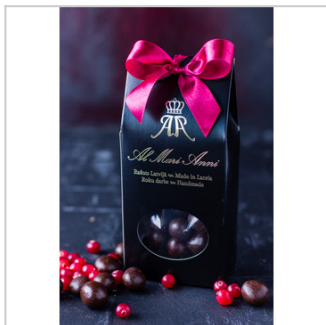


Product group  
Confectionery & Cocoa preparations  
Product subgroup  
Chocolate and other food preparations  
containing cocoa,  
Chocolate bars and slabs  
Product code  
1806  
Product line

Product weight NET 80 Gram (g)  
Product weight GROSS 108 Gram (g)  
Alcohol % by volume 0  
Storage terms (days) 270  
Storage temperature min (C) 13  
Storage temperature max (C) 23  
Storage conditions Dry and cool place  
Kind of packaging Packaging from composite materials  
Units per box 20



## AL MARI ANNI | CRANBERRY IN DARK CHOCOLATE

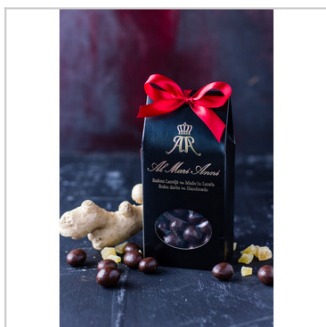


Product group  
Confectionery & Cocoa preparations  
Product subgroup  
Chocolate and other food preparations  
containing cocoa,  
Fruits/berries/nuts in chocolate  
Product code  
1806  
Product line

Product weight NET 100 Gram (g)  
Product weight GROSS 118 Gram (g)  
Alcohol % by volume 0  
Storage terms (days) 365  
Storage temperature min (C) 13  
Storage temperature max (C) 23  
Storage conditions Dry and cool place  
Kind of packaging Packaging from composite materials



## AL MARI ANNI | CANDIED GINGER IN DARK CHOCOLATE

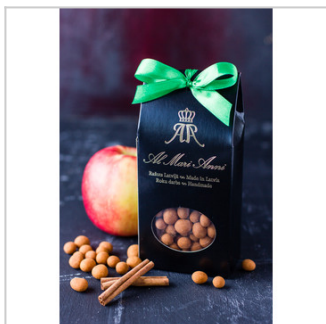


Product group  
Confectionery & Cocoa preparations  
Product subgroup  
Chocolate and other food preparations  
containing cocoa,  
Fruits/berries/nuts in chocolate  
Product code  
1806  
Product line

Product weight NET 100 Gram (g)  
Product weight GROSS 118 Gram (g)  
Alcohol % by volume 0  
Storage terms (days) 365  
Storage temperature min (C) 13  
Storage temperature max (C) 23  
Storage conditions Dry and cool place  
Kind of packaging Packaging from composite materials  
Units per box 10



## AL MARI ANNI | APPLE IN WHITE CHOCOLATE COVERED WITH CINNAMON

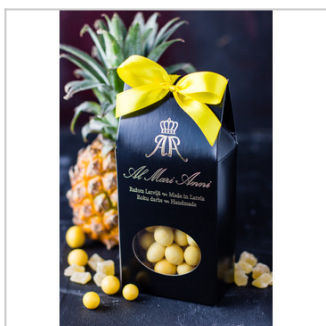


Product group  
Confectionery & Cocoa preparations  
Product subgroup  
Chocolate and other food preparations  
containing cocoa,  
Fruits/berries/nuts in chocolate  
Product code  
1806  
Product line

Product weight NET 100 Gram (g)  
Product weight GROSS 118 Gram (g)  
Alcohol % by volume 0  
Storage terms (days) 365  
Storage temperature min (C) 13  
Storage temperature max (C) 23  
Storage conditions Dry and cool place  
Kind of packaging Packaging from composite materials  
Units per box 10



## AL MARI ANNI | PINEAPPLE IN WHITE CHOCOLATE

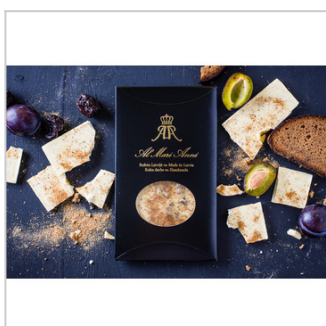


Product group  
Confectionery & Cocoa preparations  
Product subgroup  
Chocolate and other food preparations  
containing cocoa,  
Fruits/berries/nuts in chocolate  
Product code  
1806  
Product line

Product weight NET 100 Gram (g)  
Product weight GROSS 118 Gram (g)  
Alcohol % by volume 0  
Storage terms (days) 365  
Storage temperature min (C) 13  
Storage temperature max (C) 23  
Storage conditions Dry and cool place  
Kind of packaging Packaging from composite materials  
Units per box 10



## AL MARI ANNI | WHITE CHOCOLATE WITH PRUNES MIXED WITH LATVIAN RYE BREAD

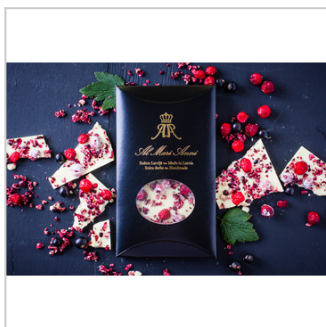


Product group  
Confectionery & Cocoa preparations  
Product subgroup  
Chocolate and other food preparations  
containing cocoa,  
Chocolate bars and slabs  
Product code  
1806  
Product line

Product weight NET 80 Gram (g)  
Product weight GROSS 108 Gram (g)  
Alcohol % by volume 0  
Storage terms (days) 270  
Storage temperature min (C) 13  
Storage temperature max (C) 23  
Storage conditions Dry and cool place  
Kind of packaging Packaging from composite materials  
Units per box 20



## AL MARI ANNI | WHITE CHOCOLATE WITH BLACK CURRANT, CRANBERRIES, SPRINKLED WITH BLACK CURRANT FLAKES



Product group  
Confectionery & Cocoa preparations  
Product subgroup  
Chocolate and other food preparations  
containing cocoa,  
Chocolate bars and slabs  
Product code  
1806  
Product line

Product weight NET 80 Gram (g)  
Product weight GROSS 108 Gram (g)  
Alcohol % by volume 0  
Storage terms (days) 270  
Storage temperature min (C) 13  
Storage temperature max (C) 23  
Storage conditions Dry and cool place  
Kind of packaging Packaging from composite  
materials  
Units per box 20



## AL MARI ANNI | MILK CHOCOLATE WITH FREEZE-DRIED STRAWBERRIES, PISTACHIOS AND VIOLETS



Product group  
Confectionery & Cocoa preparations  
Product subgroup  
Chocolate and other food preparations  
containing cocoa,  
Chocolate bars and slabs  
Product code  
1806  
Product line

Product weight NET 80 Gram (g)  
Product weight GROSS 108 Gram (g)  
Alcohol % by volume 0  
Storage terms (days) 270  
Storage temperature min (C) 13  
Storage temperature max (C) 23  
Storage conditions Dry and cool place  
Kind of packaging Packaging from composite  
materials  
Units per box 20



## AL MARI ANNI | WHITE CHOCOLATE WITH DRIED APRICOTS, ROASTED ALMONDS AND LEMON ZEST



Product group  
Confectionery & Cocoa preparations  
Product subgroup  
Chocolate and other food preparations  
containing cocoa,  
Chocolate bars and slabs  
Product code  
1806  
Product line

Product weight NET 80 Gram (g)  
Product weight GROSS 108 Gram (g)  
Alcohol % by volume 0  
Storage terms (days) 270  
Storage temperature min (C) 13  
Storage temperature max (C) 23  
Storage conditions Dry and cool place  
Kind of packaging Packaging from composite  
materials  
Units per box 20



## AL MARI ANNI | DARK CHOCOLATE WITH HANDPICKED PECANS, HAZELNUTS, ALMONDS AND EDIBLE GOLD

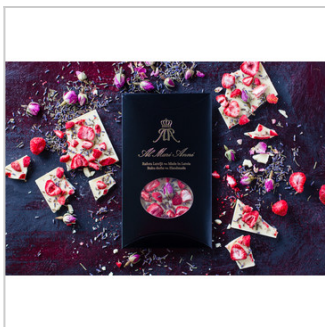


Product group  
Confectionery & Cocoa preparations  
Product subgroup  
Chocolate and other food preparations  
containing cocoa,  
Chocolate bars and slabs  
Product code  
1806  
Product line

Product weight NET 80 Gram (g)  
Product weight GROSS 108 Gram (g)  
Alcohol % by volume 0  
Storage terms (days) 230  
Storage temperature min (C) 13  
Storage temperature max (C) 23  
Storage conditions Dry and cool place  
Kind of packaging Packaging from composite materials  
Units per box 20



## AL MARI ANNI | WHITE CHOCOLATE WITH FREEZE-DRIED STRAWBERRIES, PRECIOUS FLOWERS OF LAVENDER AND ROSES

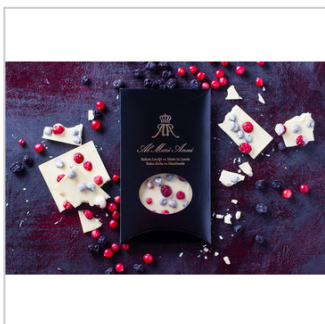


Product group  
Confectionery & Cocoa preparations  
Product subgroup  
Chocolate and other food preparations  
containing cocoa,  
Chocolate bars and slabs  
Product code  
1806  
Product line

Product weight NET 80 Gram (g)  
Product weight GROSS 108 Gram (g)  
Alcohol % by volume 0  
Storage terms (days) 270  
Storage temperature min (C) 13  
Storage temperature max (C) 23  
Storage conditions Dry and cool place  
Kind of packaging Packaging from composite materials  
Units per box 20



## AL MARI ANNI | WHITE CHOCOLATE WITH JUICY GARDEN CRANBERRIES AND BLACK CURRANT



Product group  
Confectionery & Cocoa preparations  
Product subgroup  
Chocolate and other food preparations  
containing cocoa,  
Chocolate bars and slabs  
Product code  
1806  
Product line

Product weight NET 80 Gram (g)  
Product weight GROSS 108 Gram (g)  
Alcohol % by volume 0  
Storage terms (days) 270  
Storage temperature min (C) 13  
Storage temperature max (C) 23  
Storage conditions Dry and cool place  
Kind of packaging Packaging from composite materials  
Units per box 20





## AL MARI ANNI | DARK CHOCOLATE WITH FLAVOURED LEMON ZEST AND PECULIAR PATTERNS OF WHITE CHOCOLATE



Product group  
Confectionery & Cocoa preparations  
Product subgroup  
Chocolate and other food preparations  
containing cocoa,  
Chocolate bars and slabs  
Product code  
1806  
Product line

Product weight NET 13 Gram (g)  
Product weight GROSS 23 Gram (g)  
Alcohol % by volume 0  
Storage terms (days) 270  
Storage temperature min (C) 13  
Storage temperature max (C) 23  
Storage conditions Dry and cool place  
Kind of packaging Packaging from composite materials  
Units per box 20



## AL MARI ANNI | DARK CHOCOLATE WITH SEA SALT, PINK PEPPER AND HOT CHILLI PEPPER

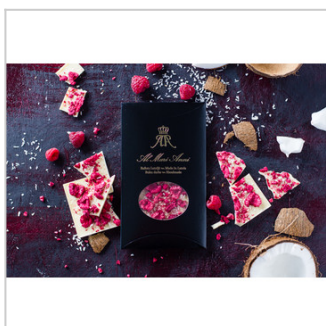


Product group  
Confectionery & Cocoa preparations  
Product subgroup  
Chocolate and other food preparations  
containing cocoa,  
Chocolate bars and slabs  
Product code  
1806  
Product line

Product weight NET 80 Gram (g)  
Product weight GROSS 108 Gram (g)  
Alcohol % by volume 0  
Storage terms (days) 270  
Storage temperature min (C) 13  
Storage temperature max (C) 23  
Storage conditions Dry and cool place  
Kind of packaging Packaging from composite materials  
Units per box 20



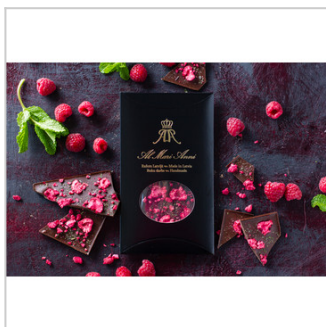
## AL MARI ANNI | WHITE CHOCOLATE WITH FREEZE-DRIED RASPBERRIES AND DELICATE COCONUT FLAKES



Product group  
Confectionery & Cocoa preparations  
Product subgroup  
Chocolate and other food preparations  
containing cocoa,  
Chocolate bars and slabs  
Product code  
1806  
Product line

Product weight NET 80 Gram (g)  
Product weight GROSS 108 Gram (g)  
Alcohol % by volume 0  
Storage terms (days) 270  
Storage temperature min (C) 13  
Storage temperature max (C) 23  
Storage conditions Dry and cool place  
Kind of packaging Packaging from composite materials  
Units per box 20

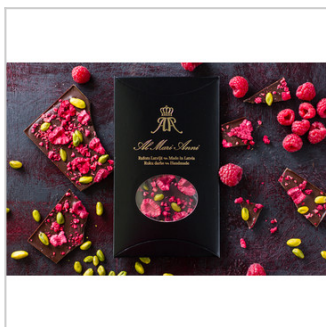
## AL MARI ANNI | DARK CHOCOLATE WITH FREEZE-DRIED RASPBERRIES AND REFRESHING MINT



Product group  
Confectionery & Cocoa preparations  
Product subgroup  
Chocolate and other food preparations  
containing cocoa,  
Chocolate bars and slabs  
Product code  
1806  
Product line

Product weight NET 80 Gram (g)  
Product weight GROSS 108 Gram (g)  
Alcohol % by volume 0  
Storage terms (days) 270  
Storage temperature min (C) 13  
Storage temperature max (C) 23  
Storage conditions Dry and cool place  
Kind of packaging Packaging from composite materials  
Units per box 20

## AL MARI ANNI | MILK CHOCOLATE WITH FREEZE-DRIED RASPBERRIES AND HANDPICKED PISTACHIOS



Product group  
Confectionery & Cocoa preparations  
Product subgroup  
Chocolate and other food preparations  
containing cocoa,  
Chocolate bars and slabs  
Product code  
1806  
Product line

Product weight NET 80 Gram (g)  
Product weight GROSS 108 Gram (g)  
Alcohol % by volume 0  
Storage terms (days) 270  
Storage temperature min (C) 13  
Storage temperature max (C) 23  
Storage conditions Dry and cool place  
Kind of packaging Packaging from composite materials  
Units per box 20

